

DELPHI

HOTEL AMALIA****



Location: an exquisite location at the foot of the mountain giving you a breathtaking view of the valley all the way to the sea

Rooms: a/c, central heating, direct dial telephone, satellite TV, radio, fridge

Facilities: reception, electronic safe, laundry service, internet corner, gift shop, parking, swimming pool, restaurant, large garden

	BB	SINGLE	DOUBLE	TRIPLE
01 NOV 18 - 31 MAR 19		74.00	41.50	33.00
Meal supplement:	Upon request			

HOTEL ACROPOLE***



Location: centrally located in a quiet area near the town centre, with balconies open onto a magnificent & uninterrupted view of the Gorge of Delphi. It is only 400m from the Archaeological site & the famous museum

Rooms: a/c, central heating, telephone, satellite TV, hairdryer

Facilities: 24 hour reception, 24 hour bar, a/c & central heating, buffet breakfast & room service, wi-fi free of charge, fax & post services, safety boxes, fireplace, owner of nearby restaurant

	BB	SINGLE	DOUBLE	TRIPLE
01 NOV 18 - 31 MAR 19		50.00	29,50	24.70
Meal supplement:	Upon request			

HOTEL ARION***



Location: centrally located in a quiet area near the town centre, in a distance of 200 metres from the amazing and absolute protected landscape, and with the Corinthian gulf filling the panoramic view

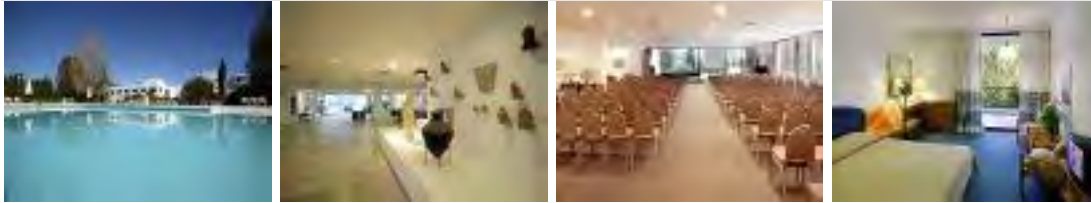
Rooms: a/c, central heating, mini bar, TV, telephone, bathroom and hair dryer

Facilities: reception area with fireplace, bar and breakfast room, fireplace, owner of nearby restaurant

	BB	SINGLE	DOUBLE	TRIPLE	QUADRUPLE
01 NOV 18 - 31 MAR 19		41.00	25.50	21.70	19.50
HB supplement:	Upon request				

OLYMPIA

HOTEL AMALIA****



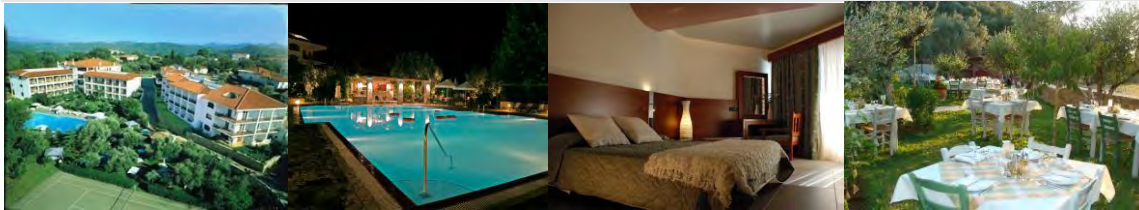
Location: ideally situated just minutes away from all the important archaeological sites of ancient Olympia.

Rooms: Air conditioning, bath, direct dial phone, room service, satellite TV.

Facilities: Fully air conditioned, parking, shopping area, TV room, swimming pool, Wheelchair access, restaurant, bar, coffee shop, congress area.

BB	SINGLE	DOUBLE	TRIPLE
01 NOV 18 - 31 MAR 19	Upon request	Upon request	Upon request
HB supplement: Upon Request			

HOTEL EUROPA****



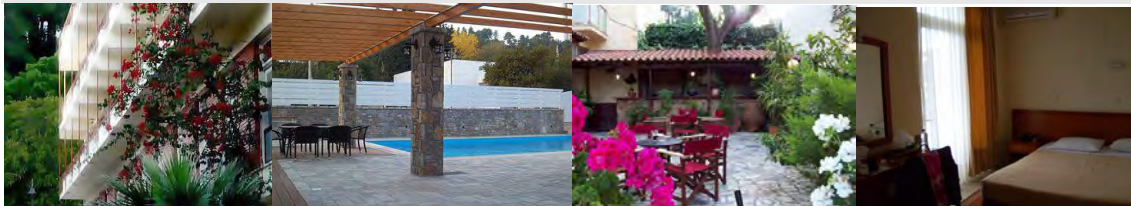
Location: located in a countryside resort near the archaeological sites of ancient Olympia.

Rooms: Air conditioning, bath, direct dial phone, fridge, music, room service, safe box, satellite TV.

Facilities: Fully air conditioned, restaurant, tavern, bar, coffee shop, congress area, dry cleaners, parking, garden, internet at lobby, jewellery shop, TV and video room, swimming pool, tennis court.

BB	SINGLE	DOUBLE	TRIPLE	QUADRUPLE
01 NOV 18 - 31 MAR 19	69.00	40.00	34.40	28.00
HB supplement: Upon Request				

HOTEL NEDA***



Location: In the center of the modern town of Olympia.

Rooms: Air condition, bath, direct dial phone, hairdryer, heating, room service, satellite TV.

Facilities: Central heating, fully air conditioned, restaurant, bar, garden, breakfast room, internet, TV room.

BB	SINGLE	DOUBLE	TRIPLE
01 NOV 18 - 31 MAR 19	45.00	28.00	26.00
HB supplement: Upon Request			

KALAMBAKA

DIVANI METEORA HOTEL ****sup



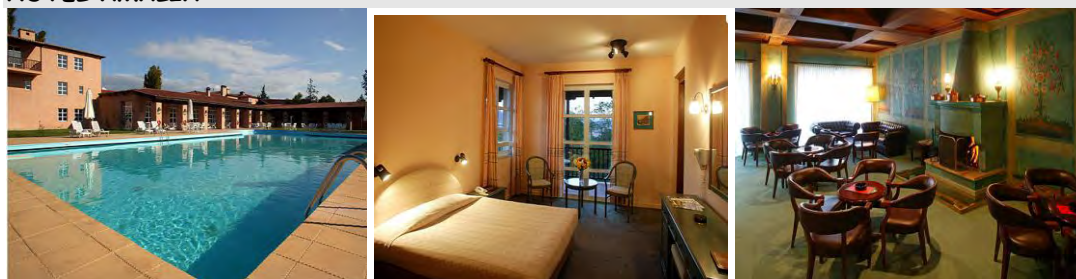
Location: sitting at the base of the Meteora rocks, boasting magnificent views, allowing guests to experience the beauty of the natural surroundings

Rooms: a/c, electronic key locks, pay & satellite TV, mini bar, direct dial telephone

Facilities: reception, restaurant, gourmet restaurant 2 bars, swimming pool, room service, business facilities, internet access, parking, spa facilities - sauna, indoor pool, steam bath, Jacuzzi, fitness centre

	BB	SINGLE	DOUBLE	TRIPLE
01 NOV 18 - 31 MAR 19		Upon Request	Upon Request	Upon Request
HB supplement:	Upon Request			

HOTEL AMALIA****



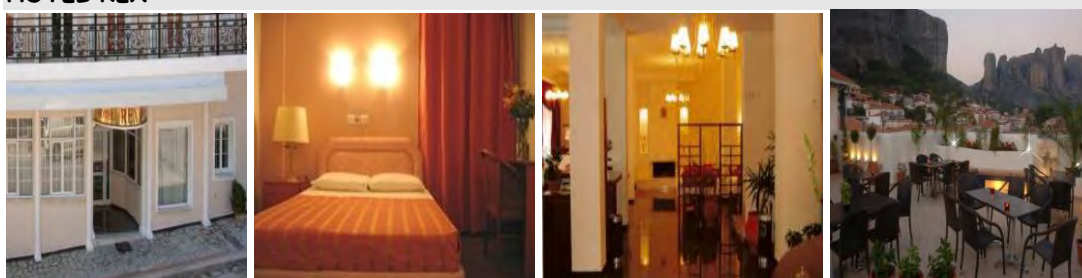
Location: in a unique location, facing the rocks of Meteora

Rooms: a/c, satellite TV, fridge, direct dial phone

Facilities: reception, swimming pool, large garden, lounge, dry cleaning, business centre, internet corner, baby sitting service, restaurant, bar

	BB	SINGLE	DOUBLE	TRIPLE
01 NOV 18 - 31 MAR 19		73.00	41.50	32.00
HB supplement:	Upon Request			

HOTEL REX***



Location: situated in the centre of the Kalambaka town in a location which connects directly with the town and the road to the monasteries of Meteora

Rooms: a/c, satellite TV, hairdryer, direct dial phone, balcony or terrace

Facilities: 24hr reception, restaurant, room service, fax/pc services, internet, dry cleaning & laundry services, roof garden, parking

	BB	SINGLE	DOUBLE	TRIPLE
01 NOV 18 - 31 MAR 19		45.00	26.00	23.00
HB supplement:	Upon Request			

HOTEL FAMISSI***



Location: at the entrance of the town of Kalambaka, situated below the magnificent, eternal rocks of Meteora

Rooms: a/c, central heating, satellite TV, radio, telephone, hairdryer, balcony with view

Facilities: reception, cafeteria, bar, lounge room, restaurant, parking, garden with view to Meteora

	BB	SINGLE	DOUBLE	TRIPLE
01 NOV 18 - 31 MAR 19		40.00	27.50	26.50
HB supplement: Upon Request				

HOTEL FAMISSI EDEN*sup**



Location: at the entrance of the town of Kalambaka, situated below the magnificent, eternal rocks of Meteora

Rooms: a/c, central heating, satellite TV, radio, telephone, hairdryer, balcony with view

Facilities: reception, cafeteria, bar, swimming pool, lounge room, restaurant, parking, garden with view to Meteora

	BB	SINGLE	DOUBLE	TRIPLE
01 NOV 18 - 31 MAR 19		52.00	36.50	31.00
HB supplement: Upon Request				

NAFPLION

HOTEL AMALIA****



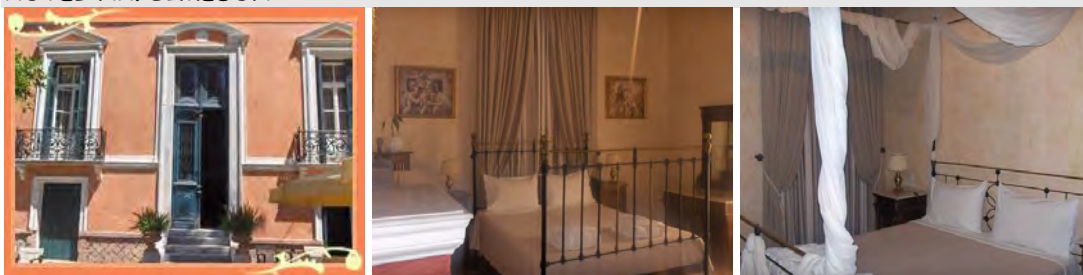
Location: at the entrance of the city, close enough for your walks around the city and far enough to enjoy the serenity and beauty of the area, within walking distance from the ruins of Ancient Tyrintha and a short drive from Epidaurus, Mycenae and Nemea

Rooms: a/c, safe, pay & satellite TV, mini bar, internet access, fridge

Facilities: reception, baby sitting, dry cleaning, parking, gardens, business centre, Wi-Fi internet access

	BB	SINGLE	DOUBLE	TRIPLE
01 NOV 18 - 31 MAR 19				
Sunday - Thursday		81.30	45.60	37.40
Friday - Saturday		90.00	49.60	41.00

HOTEL NAFSIMEDON****



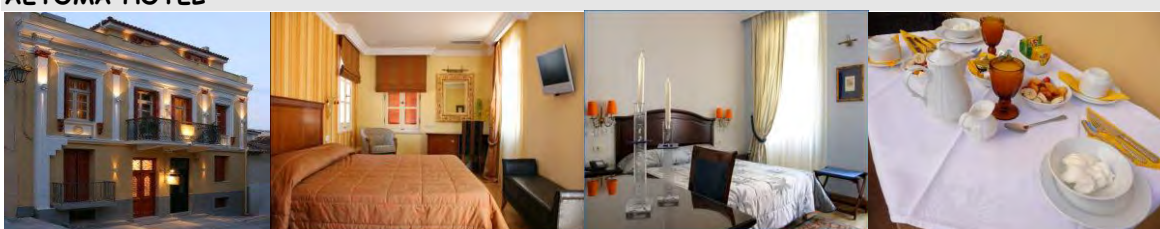
Location: centrally located in the old city opposite the park with a view of the Palamidi castle

Rooms: a/c, telephone, mini bar, TV, safe deposit box,

Facilities: reception, breakfast area, bar, terrace

	BB	SINGLE	DOUBLE	TRIPLE
01 NOV 18 - 31 MAR 19		67.00	41.00	34.00

AETOMA HOTEL****



Location: , Close proximity to all the places of interest in the centre of the old city of Nafplion

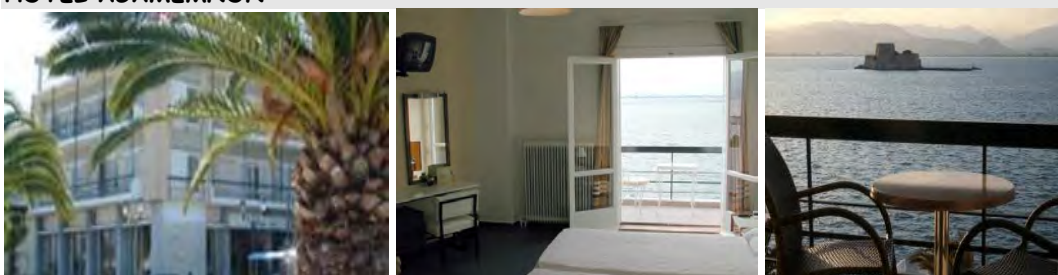
Rooms: Maid service, Heating / Air conditioning, Wireless Free Internet access, Bath Towels / Toiletries, Direct Dial Telephone both in the room and in the bathroom, Plasma satellite Television / Radio, All rooms with mini fridge, Jacuzzi bathtub or hydro massage shower, Safe Box, Hairdryer,

Facilities: Multilingual reception, Friendly, romantic atmosphere, Spacious reception/breakfast room

Superior rooms

	BB	DOUBLE	TRIPLE	QUAD
01 NOV 18 - 31 MAR 19		Upon request	Upon request	Upon request

HOTEL AGAMEMNON***



Location: on the beach of the old town of Nafplion, with majestic view to the sea, the Venetian fortress of Bourtzi, and the picturesque roads of the town, very close to the center of the old town.

Rooms: a/c, music, telephone

Facilities: reception, lounge, restaurant, bar, TV room, parking

	BB	SINGLE	DOUBLE	TRIPLE
01 NOV 18 - 31 MAR 19		54.00	32.00	27.00

ANTHEMION TRADITIONAL GUEST HOUSE***



Location: 80metres from the beach, 500 metres from the town of Nauplion

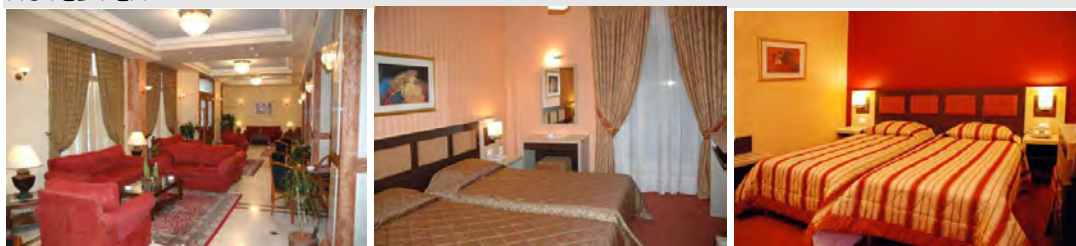
Rooms: Air-condition, Bath or shower, Daily maid service, Fridge, Hairdryer

Facilities: Garden Breakfast room

Open-air Swimming Pool, Jacuzzi, Pets allowed, Central heating, Bar Poolside

	BB	SINGLE	DOUBLE	SUITE (2 PAX)
01 NOV 18 - 31 MAR 19		Upon request	Upon request	Upon request

HOTEL REX***



Location: centrally located of Nafplion town, near the Harbor, the Railway and the Bus Station and the beautiful beaches

Rooms: a/c, radio, telephone, TV, mini bar, hairdryer

Facilities: reception, restaurant, snack bar, bar, TV lounge

	BB	SINGLE	DOUBLE	TRIPLE
01 NOV 18 - 31 MAR 19		Upon request	Upon request	Upon request



LITOCORO

HOTEL XENIOS DIAS***



	BB	SINGLE	DOUBLE	TRIPLE
01 NOV 18 - 31 MAR 19		Upon request	Upon request	Upon Request

KASTORIA

HOTEL ANASTASIOU**sup



BB	SINGLE	DOUBLE	TRIPLE	QUADRUPLE
01 NOV 18 - 31 MAR 19	Upon request	Upon request	Upon request	Upon request

HOTEL KELETRON***



BB	SINGLE	DOUBLE	TRIPLE	QUADRUPLE
01 NOV 18 - 31 MAR 19	Upon request	Upon request	Upon request	Upon request



KARPENISI

HOTEL ANESIS***



BB	SINGLE	DOUBLE	TRIPLE
01 NOV 18 - 31 MAR 19			
SATURDAY- SUNDAY	Upon request	Upon request	Upon request
MONDAY- FRIDAY	Upon request	Upon request	Upon request